

# IF I WERE A WISEMAN

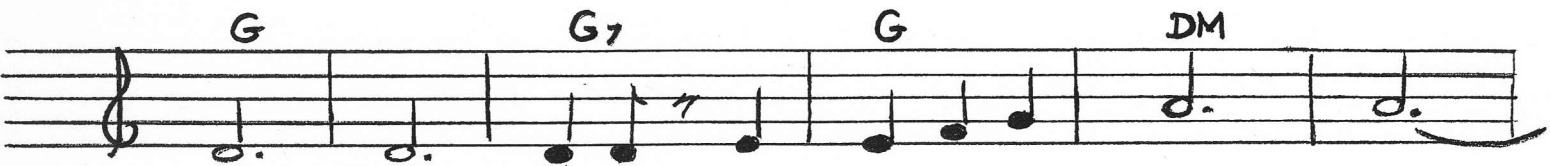
*to Janu + Dick*



WHAT CAN I GIVE HIM? WHAT CAN I OF-FER,  
 WHAT CAN I GIVE HIM? WHAT CAN I OF-FER,  
 WHAT CAN I GIVE HIM? WHAT CAN I OF-FER,



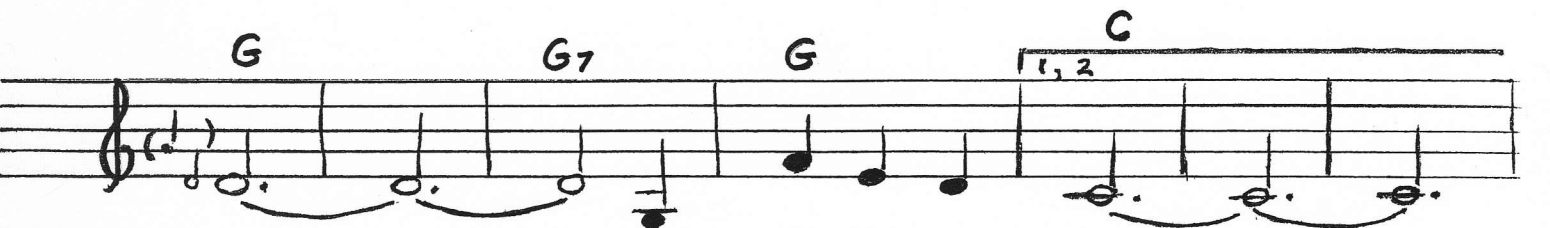
TO WEL-COME THE CHRIST CHILD, THE BA-BY SO  
 COME CHRIST-MAS MORN-ING TO HON-OR HIS  
 TO JE-SUS THE PRINCE OF PEACE, OUR SAV-IOR AND



SWEET? IF I WERE A WISE - MAN  
 BIRTH? IF I WERE A WISE - MAN  
 LORD? IF I WERE A WISE - MAN



GOLD I WOULD BRING HIM, BE-FIT-TING A  
 IN-CENSE I'D BRING HIM, TO SEND FORTH A  
 MYRRH I WOULD BRING HIM, TO SHARE IN HIS



KING TO LAY AT HIS FEET.  
 FRA-GRANCE TO COV-ER THE EARTH.  
 SUFF' RING, THE PAIN THAT HE BORE.

Handwritten musical score for the song "If I Were a Wiseman". The score is written on ten staves of music in treble clef. The lyrics are written below the notes, and guitar chords are indicated by letters (C, C7, F, EM, G, G7, DM) placed above or below the notes. The music includes various note values (quarter, eighth, and half notes), rests, and phrasing slurs. A repeat sign is present at the beginning of the first staff. The lyrics are: "BORE BUT I DO HAVE MY FAITH TO BRING THAT SHINES IN THE DARK-NESS. AND I HAVE A SONG TO SING FILLED WITH HIS PRAISE. AND I HAVE MY LOVE TO GIVE AN-NOINT-ED BY THE SPIR-IT. AND I'LL GIVE MY HEART TO HIM, EAG-ER-LY AND SURE THESE I CAN GIVE HIM. THESE I CAN OF-FER. THERE TREAS-URES AND PRES-CIOUS GIFTS. I SUD-DEN-LY SEE. IF I WERE A".

BORE BUT I  
DO HAVE MY FAITH TO BRING THAT SHINES IN THE  
DARK-NESS. AND I HAVE A SONG TO SING FILLED  
WITH HIS PRAISE. AND I HAVE MY LOVE TO  
GIVE AN-NOINT-ED BY THE SPIR-IT. AND  
I'LL GIVE MY HEART TO HIM, EAG-ER-LY AND SURE  
THESE I CAN GIVE HIM. THESE I CAN  
OF-FER. THERE TREAS-URES AND PRES-CIOUS GIFTS. I  
SUD-DEN-LY SEE. IF I WERE A

DM C

WISE - MAN, WHAT WOULD IT MAT - TER.

F G G7

I'M ON - LY GIV - ING BACK FIRST GAVE TO

C F DM G G7 C WHAT HE

ME.

K

Detailed description: This is a handwritten musical score for the song 'If I Were a Wiseman'. It consists of three staves of music in treble clef. The first staff contains the melody for the first line of the song, with lyrics 'WISE - MAN, WHAT WOULD IT MAT - TER.' and chords DM and C. The second staff continues the melody with lyrics 'I'M ON - LY GIV - ING BACK FIRST GAVE TO' and chords F, G, and G7. The third staff continues the melody with lyrics 'ME.' and chords C, F, DM, G, G7, and C. The score ends with a double bar line and two lightning bolt symbols. A small 'K' is written to the left of the third staff.